

GLOW // ARCHIVES

Bryant Holsenbeck:
A Gathering of Moons
GLOW 2026

Steel Sculpture

Location: Post Office

Bryant Holsenbeck is a Durham based, environmental artist and educator. Driven by a desire for conservation Bryant sees potential in the everyday objects we discard and uses said refuse to create her sculptures. Teens and adults in the community had the opportunity to participate in the construction of this piece; inspiring them to think critically about how waste impacts the environment and consequently ourselves.

Tangled monofilament line collected by the Duke Marine lab in Beaufort , NC adorns this sculpture; influenced by the 95 known moons of Jupiter. This sculpture glows with reflected light, in the same way that our moon, and all the moons in our solar system glow with reflected light from the same sun. "A Gathering of Moons" is about reuse, community, and inspired by the vast night sky.



Robin Vuchnich:
Phantom Spring
GLOW 2026

New Media Light Projection

Location: Ivy-Ellington

Robin Vuchnich is a Tennessee-based New Media artist and founder of XO Immersive, an interactive art studio specializing in a wide array of digital installations. These installations leverage light-based and interactive art to engage with public science, social change, community, and the natural world. Like the architects who designed the Ivy-Ellington over 150 years ago, Vuchnich uses this historic house as a platform to share her reverence for nature. Using 3D projection mapping technology, Vuchnich projects a kaleidoscope of flowers that conforms to every detail of the historic home. Phantom Spring reminds us of the beauty and color of spring, even in the darkest part of winter.



GLOW // ARCHIVES

Erik Beerbower:
Find Your Happy Place
GLOW 2026

Steel Sculpture

Location: Downtown Cary
Park near the Library

Erik Beerbower is a North Carolina-based sculptor and educator. His larger than life structures are often interactive and use color, form, and sound to spark joy, play, and wonder within the community. One of the driving concepts behind Beerbower's work is presence; creating a multisensory experience to encourage the public to pause and be fully engaged in the moment. Find Your Happy Place creates space and the opportunity for the community to reflect on the happiness already present in each of our lives through light, music, and a welcoming place to rest.

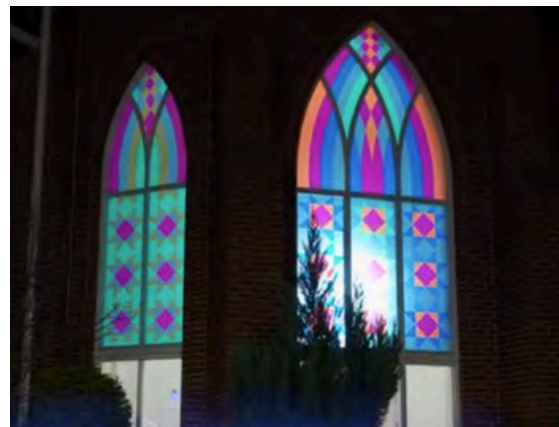
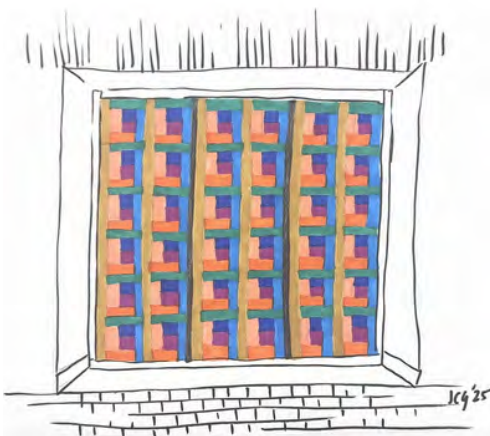


**Julia Gartrell: Cool Evening
Stars & Warm Log Cabin**
GLOW 2026

Window Installation

Location: First Cary United
Methodist Church &
Academy Pavillion

Julia Gartrell is a North Carolina based sculptor who uses a wide range of materials including wood, ceramic, textile and found objects to create work exploring material culture and history. These illuminated quilted windows bring warmth and comforting patterns to the spaces in which they are installed. Quilting is a craft based in thrift and practicality, but it also provided a creative outlet for anonymous makers in history, most of whom were women. By using traditional quilt block patterns in transparent window film, each space is transformed into a familiar but modernized version of pattern piecing. Placed at each end of downtown, these warm quilts frame the urban area and cozily illuminate the dark winter evenings.



GLOW // ARCHIVES

Britt Flood:
The Persistence of Almost
GLOW 2026

Light Mural

Location: Parking Deck

Britt Flood is a North Carolina based painter and public artist who transforms overlooked spaces into sites of visual poetry. Her light art installations are an extension of her gestural drawing and painting practice. These large scale marks mimic oversized sketches, crafted from hundreds of yards of looping glowing tubes. The floral forms climb the walls; speaking to the persistence of a single mark, repeated and reaching and how that can grow into something expansive. Through light, scale, and movement; “The Persistence of Almost” manifests the experience of ongoing growth, tenacity, and the quiet intangible moments that define actualization.



Helen Seebold:
Lighted Labryinth
GLOW 2026

Solar Labryinth

Location: Ivy-Ellingotn Lawn

Helen Seebold is a multimedia artist based in Cary, North Carolina. Her community-driven, installations encourage viewers to explore the possibilities of public spaces, through interactive art. A labyrinth, unlike a maze, leads to a center and back out again; there is no right or wrong path. Walking the labyrinth invites introspection and might be meditative, playful, or mysterious. This installation of “Lighted Labyrinth” adds cool revitalizing blue light for the participant’s evocative evening or nighttime walk. Seebold’s love of nature and interest in ancient global traditions fuels her creativity, inviting the viewer to reflect on the beauty of the living Earth and their place in it.



Map of 2026 GLOW installations



Academy Street Artwork Projects presents

GLOW

JANUARY-MARCH 2026

CHATHAM ST.



ACADEMY ST.



PARKING DECK



IVEY ELLINGTON



2B



3



2A

DOWNTOWN CARY PARK



1

ARTWORK LOCATIONS

- 1 Erik Beerbower
Downtown Cary Park near the Library
- 2 Julia Gartrell
*A. Academy Pavilion
B. First Cary United Methodist Church*
- 3 Bryant Holsenbeck
Post Office
- 4 Robin Vuchnich
Ivey-Ellington
- 5 Helen Seebold
Ivey-Ellington Lawn
- 6 Britt Flood
Parking Deck

Academy Street Artwork Projects presents **GLOW**, a temporary outdoor display of technology and light art installations on view in Downtown Cary. These pop-up, temporary, installations illuminate the darkest days of winter. **GLOW** will create a dynamic sense of place that adds energy to the street environment; creating memories, and moments of celebration for all who encounter each work of art.



CARY ARTS CENTER

KILDAIRE FARM RD.

CARY

GLOW // ARCHIVES

Olivier Landreville & Creos:
e/motion
GLOW 2025
Interactive Light Sea-saws
Location: Old Library Site

FEELING WAVY

Created by Olivier Landreville, e/motion is a revisited version of our childhood see-saw that invites you to dive into the joys and sensations of surging water. As you ride this infinite wave, the glowing liquid acts like a living entity that responds to your ups and downs.

From the integrated lit waves and water drops handlebars, to the soundscape redolent of the sea, users and bystanders are invited to explore e/motion's magical ocean ambience from every angle. Is the base a whale's tail or two water droplets? Let your imagination answer.

Sea-saw your way through this one-of-a-kind experience. Come for the laughter, stay for the memories.

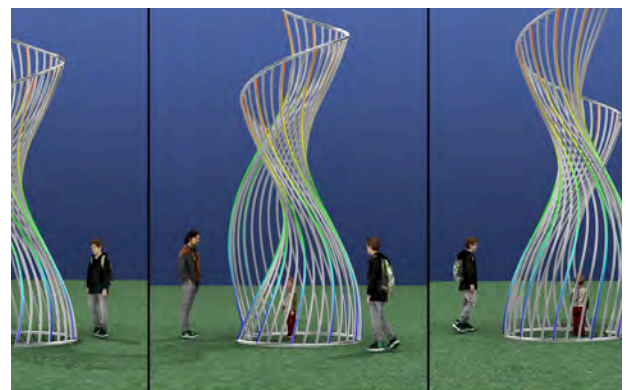
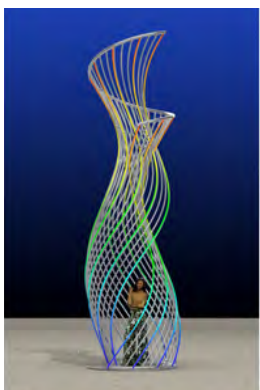
e/motion was created by Olivier Landreville in collaboration with Serge Maheu, produced by Init and is tour produced by Creos.



Matt McConnell: Chalice
GLOW 2025
Light Sculpture
Location: Townhall Front
Lawn

McConnell Studios will install a light wave structure which opens at the center to allow visitors to walk inside and look up towards the sky. The piece will be 18' x 7' x 7' and built in stainless steel with LED lighting on every fourth line.

Chalice blends color and light in vertical visual waves which draw the viewer's eye upwards towards the sky. The slightest change in perspective creates an visually altered form, especially at night. The open center allows the participants to walk inside, shifting their focus vertically. Motion sensors will act as gateways activating waves of complimentary colors through the more stable slow evolution of color in fiber optic systems lining every vertical element. The work is meant to reflect on the complexity of layering energy and relationships, which shift with only the slightest change.



GLOW // ARCHIVES

Rhett Hissam: Layers of Appalachia GLOW 2025

Projection Installation
Location: Old Library Site

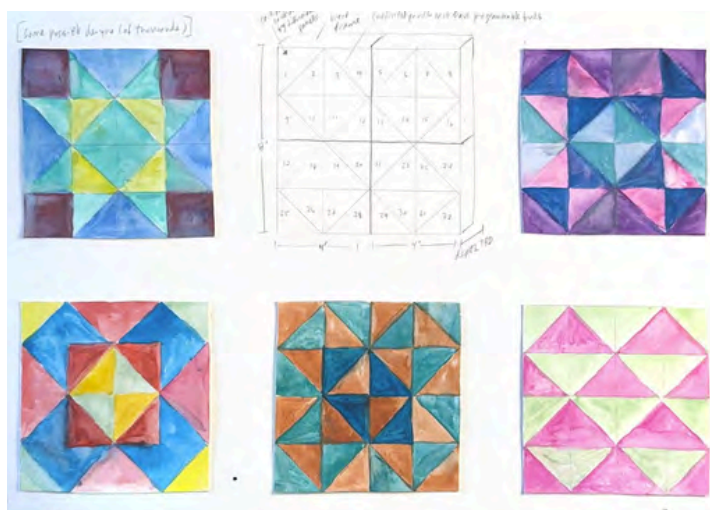
Dedicated to the resilience of nature and the healing of the blue ridge post hurricane Helene, "Layers of Appalachia" takes you on a journey inspired by the artist's time spent on trails in the Asheville area. The animation features a combination of photos scanned trails from this winter and a collection of native plants used to recreate the lush forest environment of spring. Contrasting the aftermath of the floods with picturesque 3D scenes, this piece comments on the reality of the environment in the current day with the representation of media in the disinformation age. Intertwined with a hope for the healing cycles of nature, the light based installation serves as a reminder for the inevitable regrowth that follows a period of disruption.



Julia Gartell: Dynamic Light Quilt GLOW 2025

Suspended Light Sculpture
Location: Ashworth Building

Tapping into her fascination of quilts, artist Julia Gartell will create a wall-bound installation that celebrates the dynamic history and visual complexity of the quilt. Using a specific grid pattern of 32 individual triangles and 32 smart bulbs that can each display millions of colors, the number of combinations created approximates infinity. Smart bulbs will be used to program illumination of different quilt patterns which will be on continuous rotation. This piece will be both static and active— each quilt square will stay illuminated for a period of time before morphing into the next pattern. Individual patterns as well as changing colors, styles, and forms of the images will capture the viewer's attention. Color will be used to emphasize each design and make it come to life.



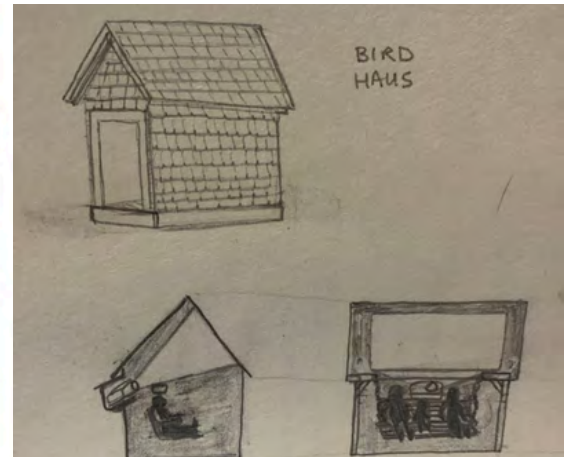
GLOW // ARCHIVES

Bec Conrad: Bird Haus **GLOW 2025**

Light Projection Sculpture

Location: Post Office Front Plaza

How often do we get stuck in the routine of our daily lives? How often do we get absorbed by our obsessive thoughts, sucked into our worries and derailed by distractions? What if you could travel to a distant place without going anywhere? A place without cars or smart phones, a place among the birds. Bird Haus will be a life size bird house for people. Instead of providing food for birds, Bird Haus will provide an immersive space for people to escape daily life and drift off into the world of birds. Standing about 10 feet tall, 6.5 feet wide and 8.5 feet long, Bird Haus will be a tiny cabin constructed of rough cut wood and covered in exterior wooden shingles. Inside the cabin will be a swinging wooden bench, projector, and surround speakers where viewers can listen and be absorbed in daytime and nighttime nature scenery.



Robin Vuchnich & Xo **Immersive: Interactive Wall** **GLOW 2025**

Light Projections

Location: Downtown Park on Amphitheater Wall

New Media artist, Robin Vuchnich will install an interactive piece on the amphitheater wall. Spectators can use their body movement to trigger changes to the trajectory of thousands of gently falling flowers and whimsical shapes in a colorful large-scale, immersive projection where they also will see their own figure reflected in the art. As each spectator-turned-performer finds hidden triggers by moving their arms, an ever evolving and dynamic interactive visual unfolds.



GLOW // ARCHIVES

Max Dowdle: Glowfort II GLOW 2025

Light Sculpture

Location: Front Lawn of Cary
Arts Center

Glowfort II is a breathtaking installation that will undoubtedly delight and amaze visitors in Cary. The installation is designed to be viewed up close, allowing visitors to fully immerse themselves in its vibrant colors and intricate details. Interactive features are sure to captivate visitors, as they can explore the fort and experience the changing light patterns while moving throughout the space. The piece is built to withstand extensive interaction, ensuring its durability. The robust design means that the more interactive the installation, the more durable it becomes, ensuring that it will continually enchant its visitors.



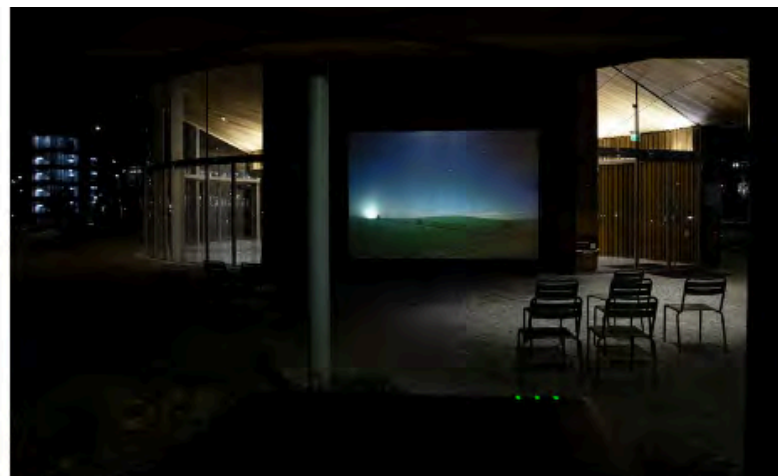
MJ Sharp: Neolithic Night GLOW 2025

*Photograph Projection on
Screen*

Location: Downtown Cary
Park Academy Pavilion

A vanishingly small percentage of our evolutionary time as human beings has been spent in artificial light. For a large percentage of the world's population, the experience of night is quickly becoming a boutique and privileged one. When we are robbed of night—from seeing the night sky that fueled the world's mythologies to experiencing our own creaturely human adaptation to darkness — what are we missing?

MJ Sharp's photographs taken of prehistoric ruins in the UK during her time as a Fulbright Scholar at the University of Exeter will be projected as a large scale immersive display on the front lawn of Town Hall. Recent archaeological evidence suggests that prehistoric people were visiting these sites in low light or at night. This display will invite present-day people to meditate on our current experiences of night. The projection will begin at dusk and run until 10 p.m.



GLOW // ARCHIVES

Bryant Holsenbeck: SMACK II **GLOW 2025**

Suspended Light Installation

Location: Library Bridge in
Downtown Park

A smack of jellyfish is a collective noun for a group of jellyfish. The term 'smack' comes from Old English and means "a little taste," "smattering," or "small portion." The letters of the word may mimic the motion of a smack when colliding with one another.

Bryant Holsenbeck is a mixed media environmental artist, activist, educator, and author based in Durham, North Carolina. Holsenbeck uses a variety of both natural and human-made materials to create art out of repurposed items that might otherwise be discarded. Working with students, Holsenbeck used plastic debris from our waterways and oceans to make the large-scale environmental installation. With the help from teachers, art students and environmental students at Green Level High School and the Oceans Nicholes School of Environmental studies at Duke University, the unique installation showcases plastic material and rope debris from our waterways and oceans, repurposed into a smack of jellyfish floating overhead. Previously shown in Bond Park for Spring Daze Arts & Crafts Festival in 2024, this installation is currently at Downtown Cary Park underneath the library bridge and featured in GLOW 2025.



GLOW // ARCHIVES

LEVR Studios & Rhett Hissam:
Recurrent Change
GLOW 2024
Projection Installation

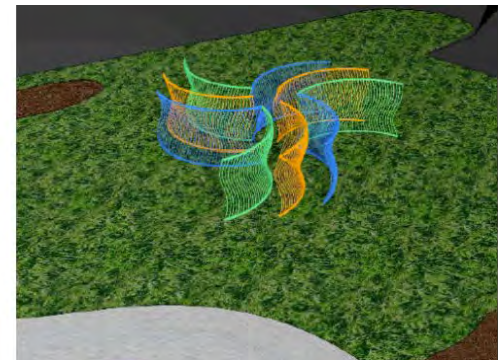
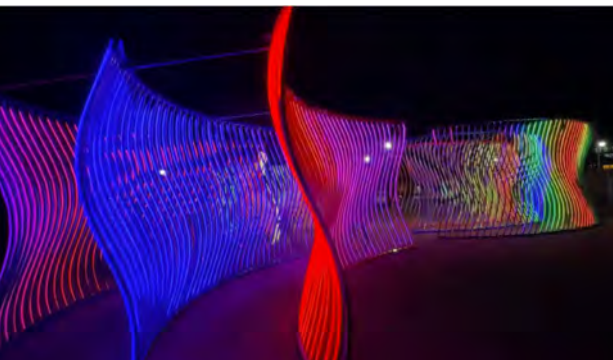
An cyclical animated display inspired by the blooms and symbolic associations of flowers to the seasons. Based on observation and folklore, each type of plant featured in the collection is intended to capture the essence of each month of the year. Showcased at the start of the new year - it offers space for reflection of the years past & facilitates excitement for the month and seasons to come.



Matt McConnell:
Evolution Field III
GLOW 2024
Light Sculpture

McConnell Studios installed a new triple wave version titled 'Evolution Field III' for the GLOW 2024 festival in Cary, NC at the Old Library Site. Basic layout of three sets of elements around 45 feet in diameter.

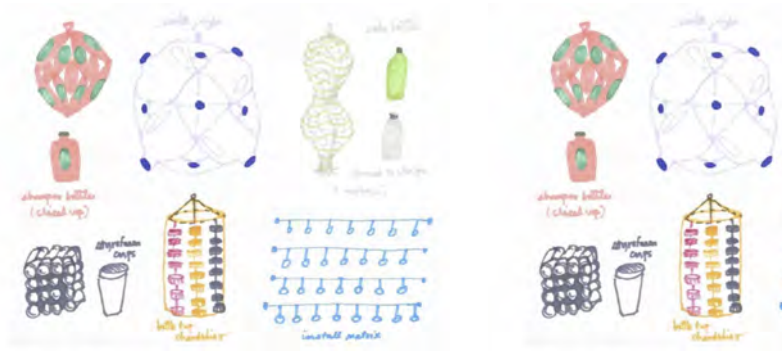
Evolution Field is a triple layer moiré wall that blends color and light in visual waves reminiscent of galaxy forms. The slightest change in perspective creates an evolution in form, which will be seen from great distances, especially at night. The three layers create valleys that participants can walk through, shifting focus from layers to an internal landscape. Motion sensors set at the ends, and in other locations, will act as gateways, activating waves of complimentary colors through the more stable slow evolution of color in fiber optic systems lining every vertical element. The work is meant to reflect on the complexity of layering energy and relationships, which shifts with only the slightest change.



GLOW // ARCHIVES

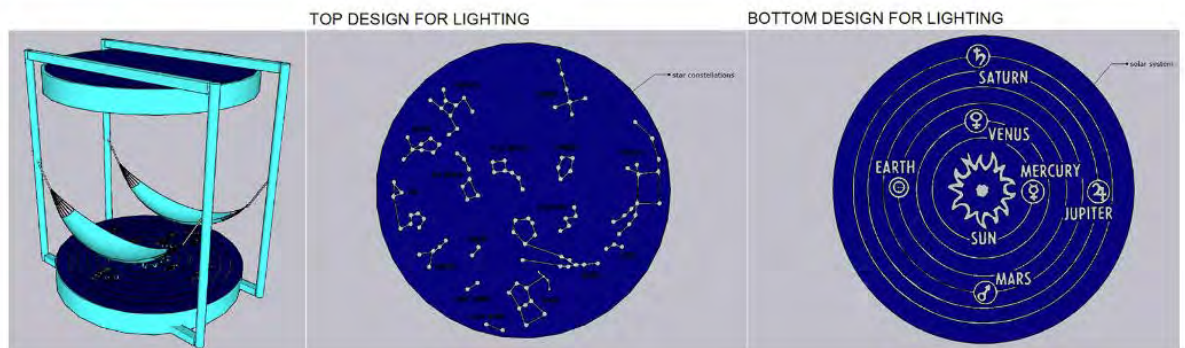
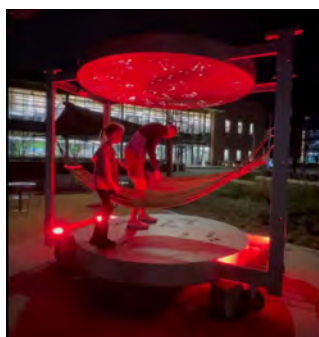
Julia Gartell + Bec Conrad
GLOW 2024
Light Sculpture

The suspended light sculpture is comprised of a series of 100 hand-fabricated hanging lanterns pulsing in programmed colored light sequences. The lanterns will be handmade from recycled materials that convey light in elegant ways, fabricated with careful and creative attention to their design properties. The plan involves creating 10-20 of each lantern design, building a matrix of evolving shapes that mimic one another but transform in form and material. The lanterns will be suspended above head height, and the shape and infrastructure of the site will determine the final configuration. The lights will be invisibly suspended within the forms, and by dark they will create magical patterns. Lead artist Julia Gartell is dedicated to creating work that is accessible and also helps viewers consider materials in a new way. With this project, she aims to repurpose familiar plastics such as milk cartons, shampoo bottles, and other consumables. The base materials will be recognizable but utterly transformed and transfixing



Erik Beerbower: Constellations
GLOW 2024
Light Sculpture

Light pollution is defined as: brightening of the night sky caused by street lights and other manmade sources, which has a disruptive effect on natural cycles and inhibits the observation of stars and planets. Because light pollution has turned our gaze away from the stars, I wanted to remind people that there is a vast solar system and constellations above our heads. when we lay on our backs we tend to look up. This interactive sculpture allows participants to lay in the hammock and look up at a star map showing the names and placements of the constellations in the sky. Looking down participants can see a map of our solar system and where we are in relation to the sun. My goal is to remind people that there is a vast universe out there and that once upon a time human beings looked towards the heavens a lot longer than they stared at their phones.



GLOW // ARCHIVES

Robin Vuchnich & Xo Immersive GLOW 2024 Light Installation

The installation features light art created by New Media Artist, Robin Vuchnich. Via video-mapping techniques, the artwork will appear to conform to the natural details of the park and will animate into different designs, inspiring wonder, curiosity, and attention to the park as an exciting canvas for a public art activation, entertainment, and play. By leveraging cutting-edge projection mapping techniques, the tree (or splash area) will transform with projected art and a variety of animations — glimmering in the night as though bio-luminescent — creating a fantasy-like visually enchanting and naturally immersive experience for visitor's to enjoy. We are excited to collaborate closely with the City of Cary to bring this project to life, helping to foster a strong connection between the newly developed and vibrant natural space of the park, and the community it hopes to host and inspire.



Max Dowdle: Glowfort 1 GLOW 2022 Light Sculpture

"Glowfort I captures the whimsy of childhood, and the wonder of dreams. Glowfort I is a breathtaking and interactive installation that promises to amaze visitors. This artwork is designed to delight visitors by offering a unique, immersive experience that encourages interaction and exploration. The installation is built to withstand the test of time and any extensive interaction it may receive from visitors. The installation is highly interactive, encouraging visitors to explore the structure and engage with the various elements that make it up, including lights, form, and space. Overall, this artwork is sure to captivate and inspire visitors, making their time in Cary a truly unforgettable experience.



GLOW // ARCHIVES

LEVR Studios & Rhett Hissam:
Threshold
GLOW 2023
Interactive Augmented Reality Sculpture

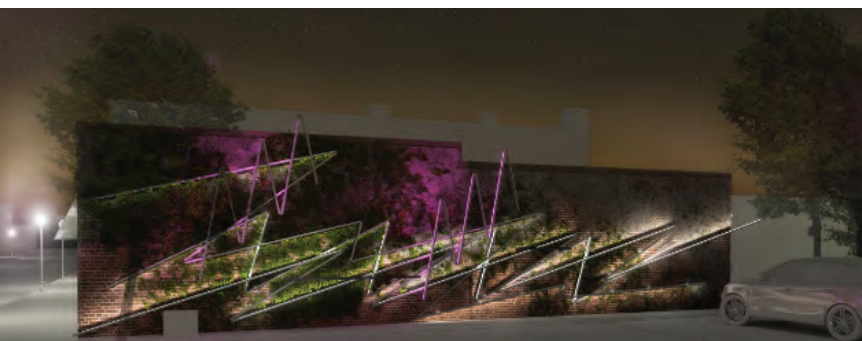
"An interactive sculpture inspired by folklore, symbology, and the healing properties of plants. The triangular structure depicts three flowering plant species along with the messages of love, intention, and joy that they carry. The illuminated doorways represent the threshold between the natural/spiritual worlds and the points of connection between the two. The imagery was created using VR technology and 3D modeling software. Find the QR codes hidden inside the piece to activate an augmented reality filter on your phone!



Kurt West
Heartbeat
GLOW 2023
Light Sculpture

"Let's go downtown" is a phrase that evokes excitement and connection with the community. A place of activity and entertainment, the downtown area of Cary, NC, brightens the town and infuses it with life. What could be more evocative of this energy than a heartbeat? The proposed light installation on the wall at 108 E. Chatham St. embodies that heartbeat with a light sculpture inspired by the visual rendition of a heartbeat on a monitor, pulsing to the rhythm of downtown.

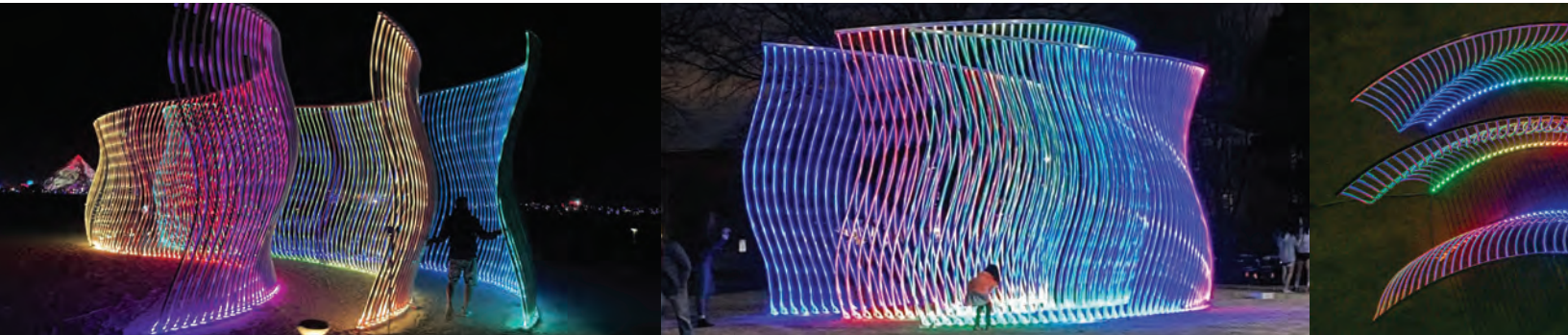
Hanging from a parapet wall cap, the Heartbeat installation consists of a cascade of linear, light gauge steel studs, traveling down the wall from left to right as a relief wall sculpture. LED lights are concealed within the flanges of the steel studs, throwing light off the brick wall and other steel members. The lighting pulses along the installation: white light at a faster pace engages the eye and elevates excitement, while pink light manifests at an intermittent, steady beat. Following the trajectory of the light along the various lines is a mesmerizing experience that invites the viewer to engage with the installation.



GLOW // ARCHIVES

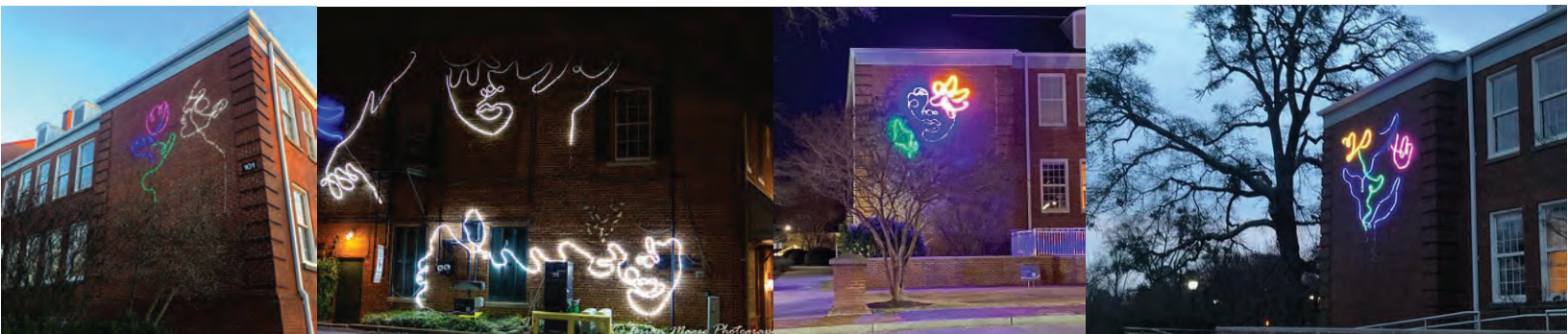
Matt McConnell: Evolution Field
GLOW 2022 & 2023
Light Sculpture

Evolution Field is a triple layer moiré wall that blends color and light in visual waves reminiscent of galaxy forms. The slightest change in perspective creates an evolution in form, which will be seen from great distances, especially at night. The three layers create valleys that participants can walk through, shifting focus from layers to an internal landscape. Motion sensors set at the ends, and in other locations, will act as gateways, activating waves of complimentary colors through the more stable slow evolution of color in fiber optic systems lining every vertical element. The work is meant to reflect on the complexity of layering energy and relationships, which shifts with only the slightest change.



Britt Flood: Your Halo is Showing
GLOW 2022
Light Murals

A whimsical, colorful work of art that will hint at "abstract portraits, hands, and flower features," artist Britt Flood's goal with this GLOW installation is to "invoke butterflies in all those who walk by. A glimmer of glee, giddiness, and excitement upon seeing the piece, just like those magic moments you feel butterflies when making a new friend, kissing someone you love, or finally feeling self love and acceptance. My hope would be for everyone to walk by this piece and forget about the world around us, even if just for a moment, and have a feeling of awe and wonder within themselves, and ultimately to take that feeling and illuminate those around us, essentially sharing our inner light with one another.



GLOW // ARCHIVES

When we see this work, evocative of a rural wheat field swaying in the breeze, we get a little taste of the distant summer even as winter dawns. Fluttering atop thousands of flexible stems that bend in the winter wind, white reflectors scatter light from the projectors in Place des Festivals. Right in the heart of the city, these stylised stalks of wheat dance and shimmer, inviting passers-by to enjoy a dreamy stroll among them. Entre les rangs / City field was first presented as part of the 4th edition of Luminothérapie, in 2013-2014, at the Place des Festivals in the Quartier des Spectacles in Montreal.

ENTRE LES RANGS / CITY FIELD
GLOW 2022
Light Sculpture

THE CREATORS

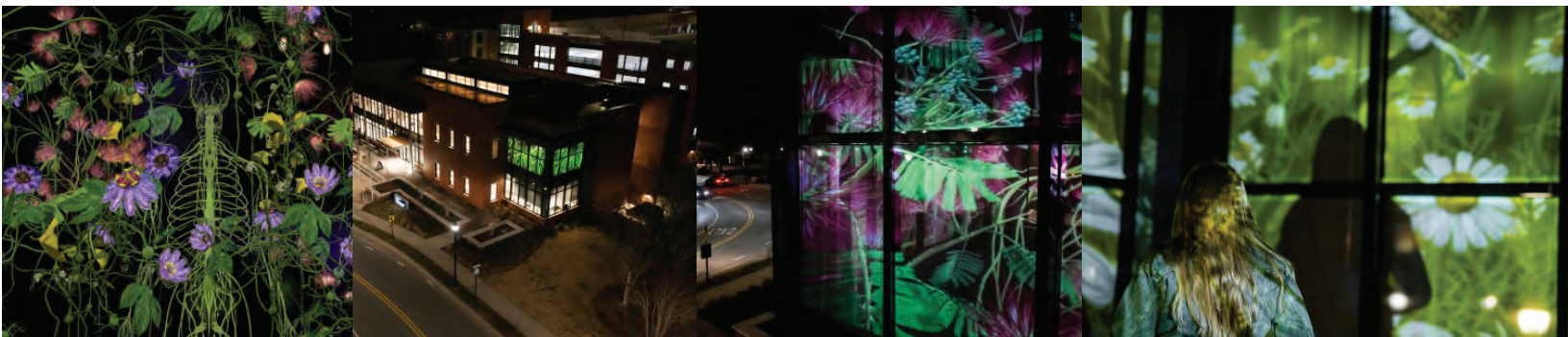
A work by Kanva Architecture in collaboration with Udo Design, Côté Jardin, Boris Dempsey and Pierre Fournier.

CREOS a leading agency of public art interactive installations in urban spaces, connects creators, and presenters of public art around the world. Cary worked closely with CREOS and a team of 30 local volunteers for over a day to install ENTRE LES RANGS at the old library site along Academy Street.



LEVR Studios & Rhett Hissam: Nourish
GLOW 2022
Dynamic VR Mural

"Selected plants representative of a category of herbal medicines known as nervines. Nervines are herbs that directly effect our nervous system. Our nervous system regulates our response to stimuli. How our body responds to stressors can effect all aspects of our physical and mental health. By tuning into our energy levels and state of mind, our nervous system can tell us what aspects we need to bring balance to. Whether you are overactive or depleted, there are plant medicines to aid in recalibration."



GLOW // ARCHIVES

Mike Cuales & Rhett Hissam:
Unseen Nature
GLOW 2021
Light Sculpture

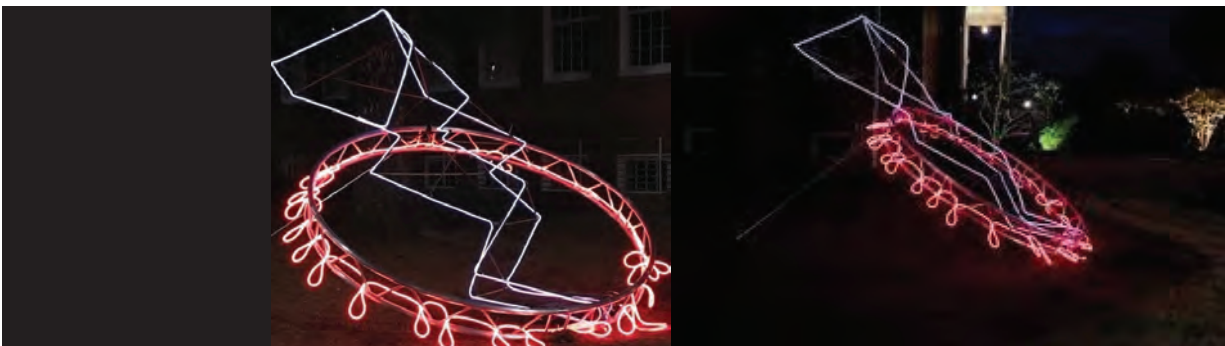
An animated journey into an energetic realm of flowers found in North Carolina. Hand painted in Virtual Reality with an accompanying soundtrack by Donovan Moran available at: rhettthis-sam.me/uneen. Since the beginning, plants have been here to aid us. If we take the time to be still, listen, and see with all of our senses, we too can access this knowing. This story invites you to take a moment and view the often overlooked yet boundless beauty of our surroundings.



Pat Fitzgerald: Bolt
GLOW 2021
Light Sculpture

"The idea behind the "Bolt" neon sculpture is threefold.

1. Vigilance! "Bolt" is a reminder that we are not out of the pandemic yet, and the sculpture is a sort of artistic public service announcement for the community to remain safe and careful, and vigilant.
2. Like the ancient Greeks, we do not understand the tragedy of why, when and where this virus strikes, it is like a lightning bolt from the sky.
3. Finally, the virus itself is visualized, making this microscopic phenomenon larger than life. In this way, people might be reminded that although we cannot see COVID, it is still a powerful and dangerous presence in our community".



GLOW // ARCHIVES

Erik Beerbower: Bonsai Tree
GLOW 2021
Metal Sculpture

"The idea for the bonsai tree sculpture was inspired by the simplicity of Japanese design. I have always been drawn to Zen gardens, the Buddhist monks that created them in ancient Japan had a great love and appreciation for their surroundings. The tree is a symbol of life, the white gravel represents the ocean, the bird is nature, and the stones reflect the mountains and islands that surrendered them. For me, this sculpture symbolizes mindfulness, remembering to appreciate my surroundings and being thankful for all that I have around me. Zen has a balance between the yin and the yang, this sculpture has a balance as well; day and night. During the day it is tranquil and meditative, at night it when the lights bounce off the metal it becomes ethereal".

This sculpture is made of hammered steel sheets over rebar armature. The little red bird is made from forks, spoons, and butter knives.



Astro Botanicals & Julia Gartrell:
Botanical Lights
GLOW 2021
Inflatable Sculpture

Botanical Lights is a pop up exhibition of glowing inflatables and tube lights on the grass to brighten up the evening sky through the month of November. Artists Astrobotanicals and Julia Gartrell teamed up together to curate this glowing installation that can be viewed both as a drive-by and walk-through experience. The inflatables are colorful towering structures- some reaching 20 ft high- and resemble flowers but not of this world, leaving viewers to their imaginations and sparking creativity.

